

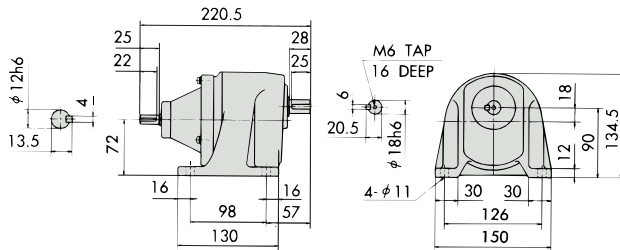
Inline Reducer Type Outline Dimensions

0.1kW · L : Foot mount type

GEAR MOTOR TA Series

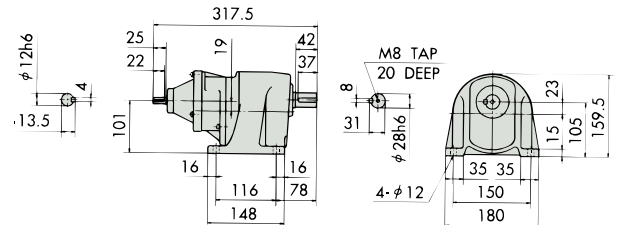
G-11 0.1kW GRTA010-18L5

Reduction ratio : 5	Approx. weight : 3.8kg
Reference page : Specification Chart→P69	



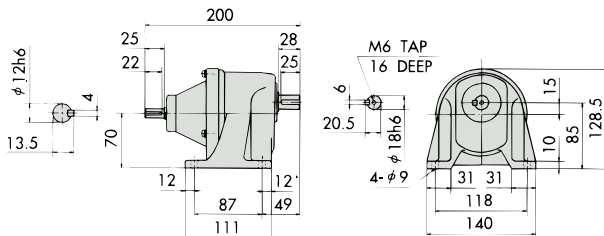
G-14 0.1kW GRTA010-28L300~450

Reduction ratio : 300, 360, 450	Approx. weight : 7.2kg
Reference page : Specification Chart→P69	



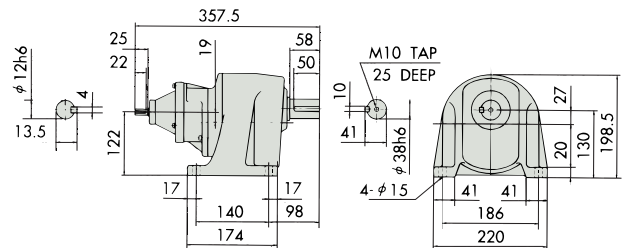
G-12 0.1kW GRTA010-18L10~50

Reduction ratio : 10, 15, 20, 25, 30, 40, 50	Approx. weight : 2.6kg
Reference page : Specification Chart→P69	



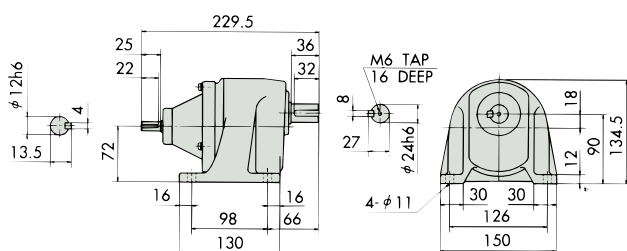
G-15 0.1kW GRTA010-38L600~1200

Reduction ratio : 600, 720, 1000, 1200	Approx. weight : 11.5kg
Reference page : Specification Chart→P69	



G-13 0.1kW GRTA010-24L60~200

Reduction ratio : 60, 75, 100, 120, 165, 200	Approx. weight : 4.0kg
Reference page : Specification Chart→P69	



Outline Dimensions

L
G-11
G-12
G-13
G-14
G-15

0.1

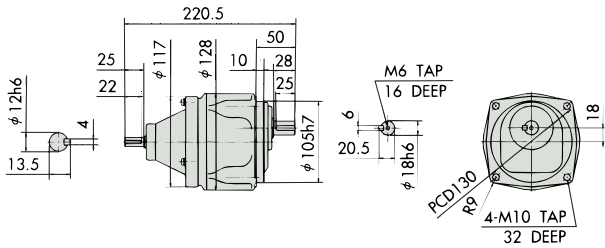
Inline Reducer Type Outline Dimensions

0.1kW · U : Face mount type

GEAR MOTOR TA Series

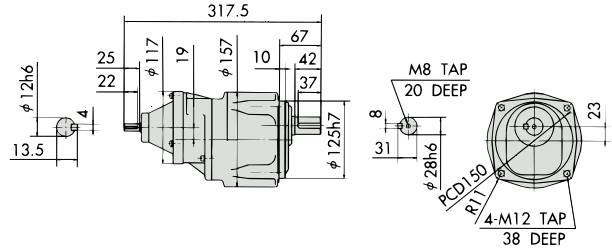
G-16 0.1kW GRTA010-18U5

Reduction ratio : 5	Approx. weight : 3.6kg
Reference page : Specification Chart→P69 Options→P57	



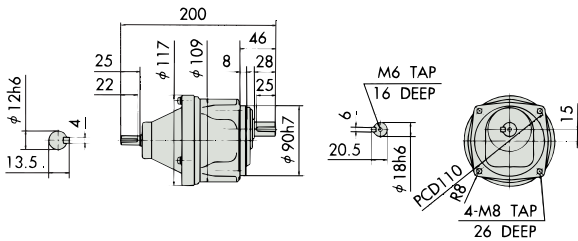
G-19 0.1kW GRTA010-28U300~450

Reduction ratio : 300, 360, 450	Approx. weight : 7.2kg
Reference page : Specification Chart→P69 Options→P57	



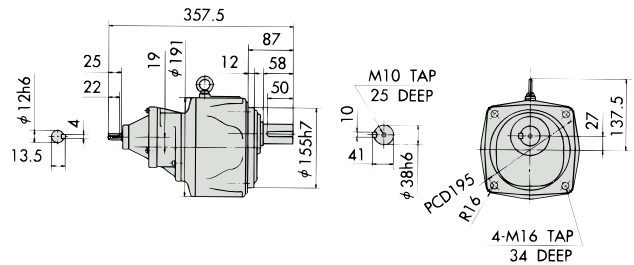
G-17 0.1kW GRTA010-18U10~50

Reduction ratio : 10, 15, 20, 25, 30, 40, 50	Approx. weight : 2.4kg
Reference page : Specification Chart→P69 Options→P57	



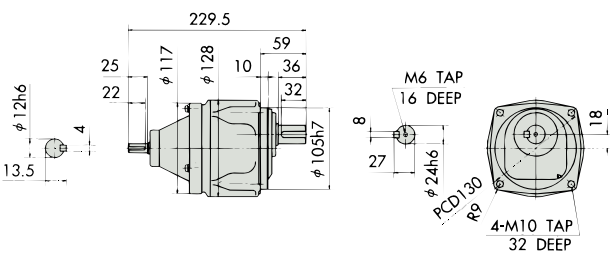
G-20 0.1kW GRTA010-38U600~1200

Reduction ratio : 600, 720, 1000, 1200	Approx. weight : 17.0kg
Reference page : Specification Chart→P69 Options→P57	



G-18 0.1kW GRTA010-24U60~200

Reduction ratio : 60, 75, 100, 120, 165, 200	Approx. weight : 3.8kg
Reference page : Specification Chart→P69 Options→P57	



Outline Dimensions

U
G-16
G-17
G-18
G-19
G-20

0.1

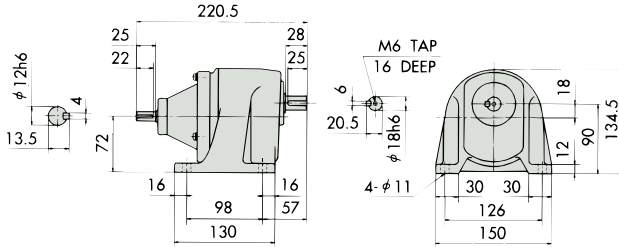
Inline Reducer Type Outline Dimensions

0.2kW · L : Foot mount type

GEAR MOTOR TA Series

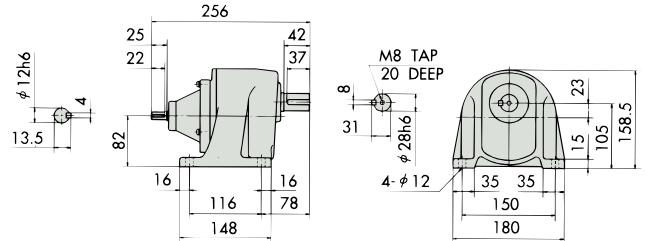
G-21 0.2kW GRTA020-18L5

Reduction ratio : 5	Approx. weight : 3.8kg
Reference page : Specification Chart→P69	



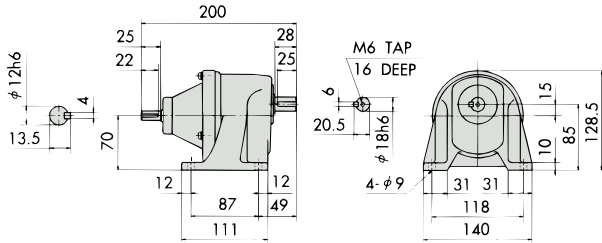
G-24 0.2kW GRTA020-28L100~200

Reduction ratio : 100, 120, 165, 200	Approx. weight : 6.2kg
Reference page : Specification Chart→P69	



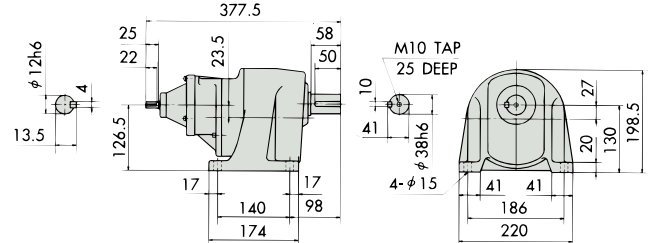
G-22 0.2kW GRTA020-18L10~25

Reduction ratio : 10, 15, 20, 25	Approx. weight : 2.6kg
Reference page : Specification Chart→P69	



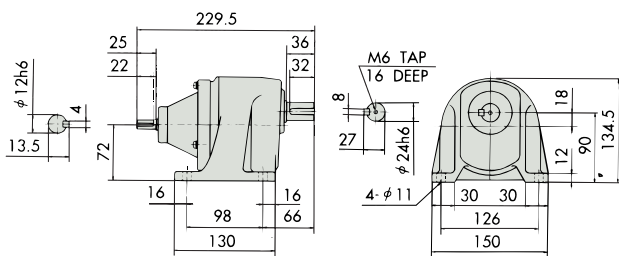
G-25 0.2kW GRTA020-38L300~450

Reduction ratio : 300, 360, 450	Approx. weight : 12.0kg
Reference page : Specification Chart→P69	



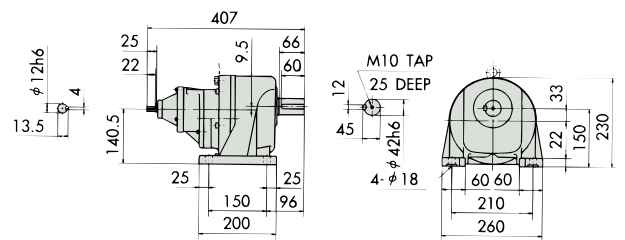
G-23 0.2kW GRTA020-24L30~75

Reduction ratio : 30, 40, 50, 60, 75	Approx. weight : 4.0kg
Reference page : Specification Chart→P69	



G-26 0.2kW GRTA020-42L600~1200

Reduction ratio : 600, 720, 1000, 1200	Approx. weight : 34.3kg
Reference page : Specification Chart→P69	



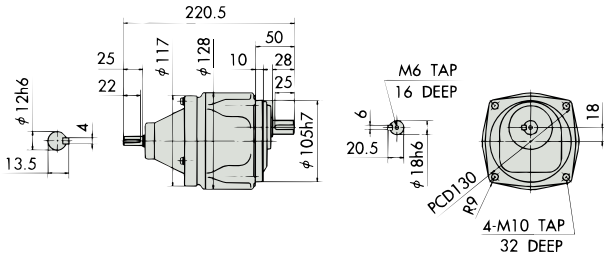
Inline Reducer Type Outline Dimensions

0.2kW · U : Face mount type / F : Flange mount type

GEAR MOTOR TA Series

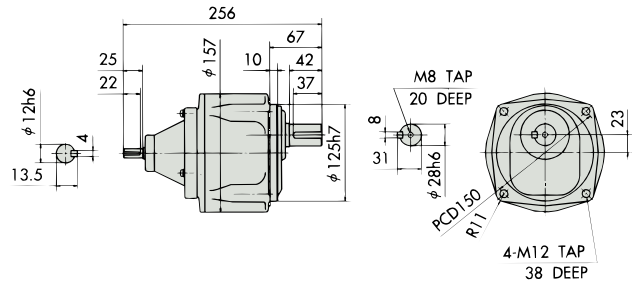
G-27 0.2kW GRTA020-18U5

Reduction ratio : 5	Approx. weight : 3.6kg
Reference page : Specification Chart→P69 Options→P57	



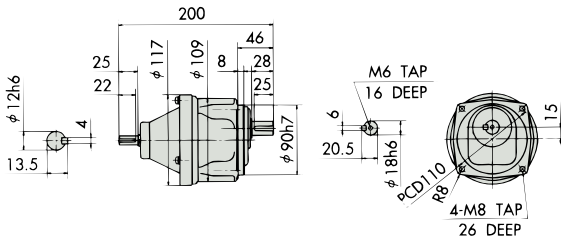
G-30 0.2kW GRTA020-28U100~200

Reduction ratio : 100, 120, 165, 200	Approx. weight : 6.2kg
Reference page : Specification Chart→P69 Options→P57	



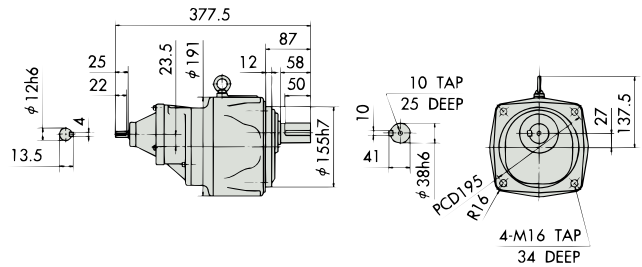
G-28 0.2kW GRTA020-18U10~25

Reduction ratio : 10, 15, 20, 25	Approx. weight : 2.4kg
Reference page : Specification Chart→P69 Options→P57	



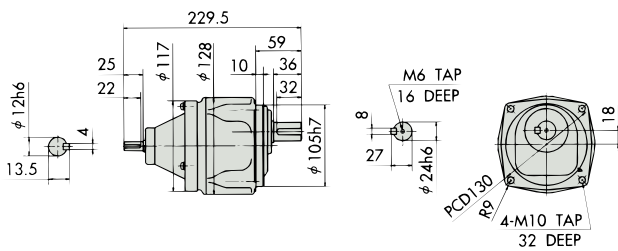
G-31 0.2kW GRTA020-38U300~450

Reduction ratio : 300, 360, 450	Approx. weight : 18.0kg
Reference page : Specification Chart→P69 Options→P58	



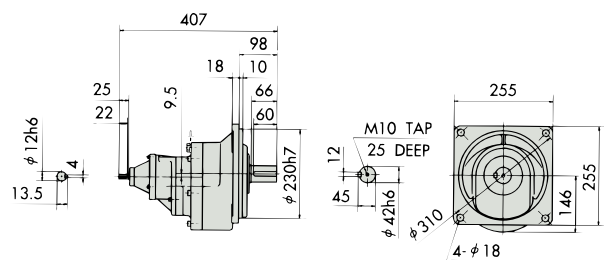
G-29 0.2kW GRTA020-24U30~75

Reduction ratio : 30, 40, 50, 60, 75	Approx. weight : 3.8kg
Reference page : Specification Chart→P69 Options→P57	



G-32 0.2kW GRTA020-42F600~1200

Reduction ratio : 600, 720, 1000, 1200	Approx. weight : 36.5kg
Reference page : Specification Chart→P69	



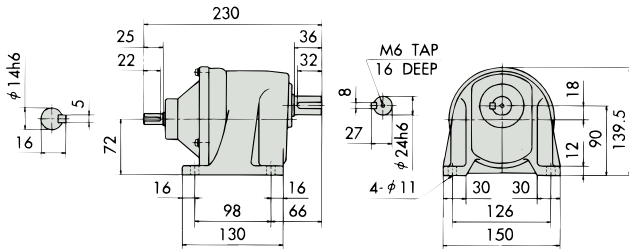
Inline Reducer Type Outline Dimensions

0.4kW · L : Foot mount type

GEAR MOTOR TA Series

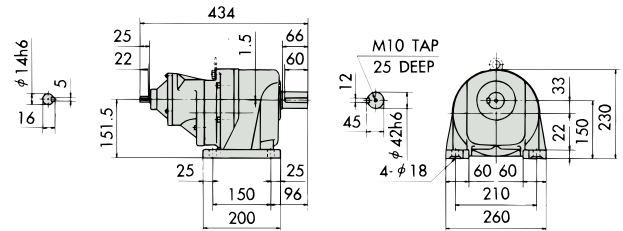
G-33 0.4kW GRTA040-24L5~25

Reduction ratio : 5, 10, 15, 20, 25	Approx. weight : 4.0kg
Reference page : Specification Chart→P70	



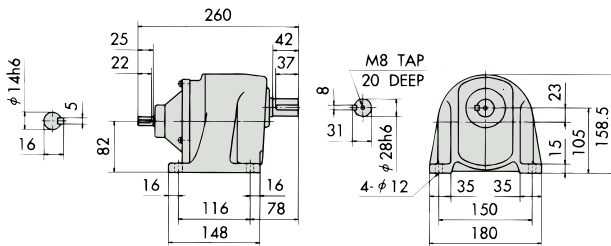
G-36 0.4kW GRTA040-42L300~450

Reduction ratio : 300, 360, 450	Approx. weight : 39.6kg
Reference page : Specification Chart→P70	



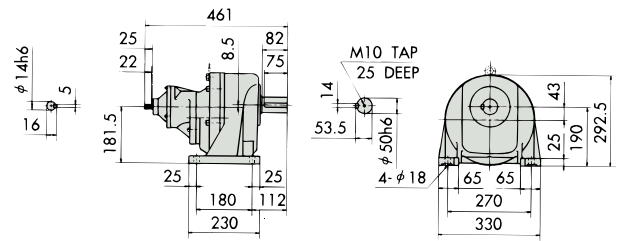
G-34 0.4kW GRTA040-28L30~75

Reduction ratio : 30, 40, 50, 60, 75	Approx. weight : 6.4kg
Reference page : Specification Chart→P70	



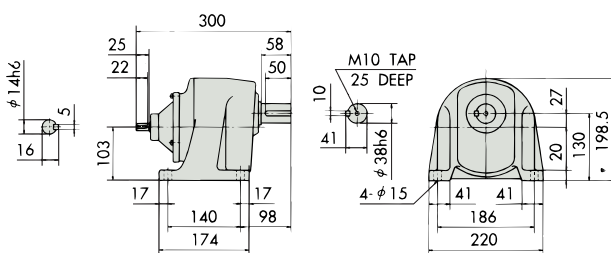
G-37 0.4kW GRTA040-50L600~1200

Reduction ratio : 600, 720, 1000, 1200	Approx. weight : 59.6kg
Reference page : Specification Chart→P70	



G-35 0.4kW GRTA040-38L100~200

Reduction ratio : 100, 120, 165, 200	Approx. weight : 10.5kg
Reference page : Specification Chart→P70	



Outline Dimensions

L
G-33
G-34
G-35
G-36
G-37

0.4

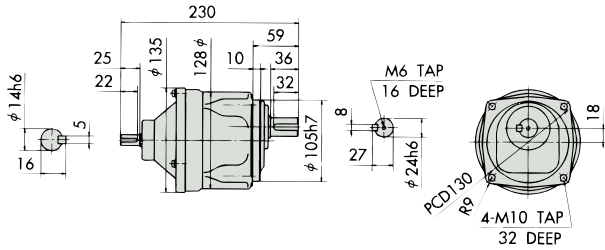
Inline Reducer Type Outline Dimensions

0.4kW · U : Face mount type / F : Flange mount type

GEAR MOTOR TA Series

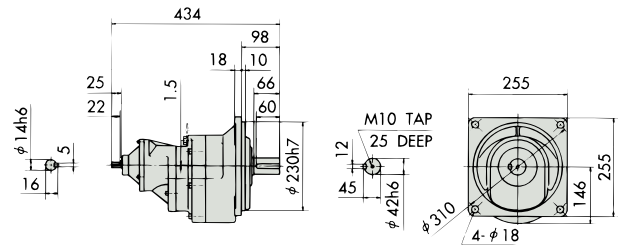
G-38 0.4kW GRTA040-24U5~25

Reduction ratio : 5, 10, 15, 20, 25 Approx. weight : 3.8kg
Reference page : Specification Chart→P70 Options→P57



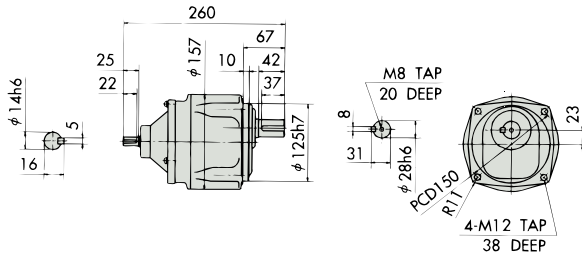
G-41 0.4kW GRTA040-42F300~450

Reduction ratio : 300, 360, 450 Approx. weight : 40.6kg
Reference page : Specification Chart→P70



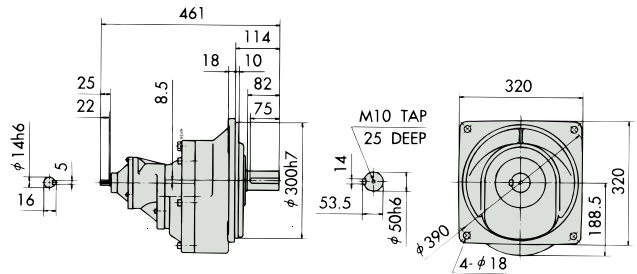
G-39 0.4kW GRTA040-28U30~75

Reduction ratio : 30, 40, 50, 60, 75 Approx. weight : 6.4kg
Reference page : Specification Chart→P70 Options→P57



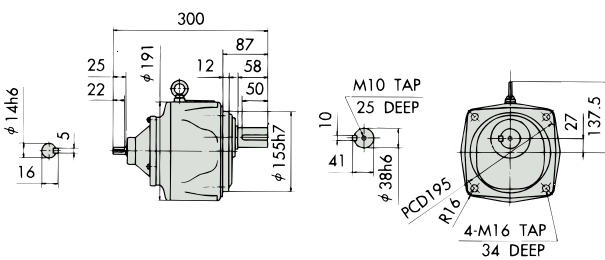
G-42 0.4kW GRTA040-50F600~1200

Reduction ratio : 600, 720, 1000, 1200 Approx. weight : 62.9kg
Reference page : Specification Chart→P70



G-40 0.4kW GRTA040-38U100~200

Reduction ratio : 100, 120, 165, 200 Approx. weight : 16.5kg
Reference page : Specification Chart→P70 Options→P58



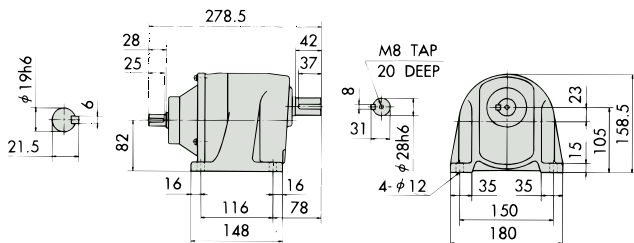
Inline Reducer Type Outline Dimensions

0.75kW · L : Foot mount type / U : Face mount type / F : Flange mount type

GEAR MOTOR TA Series

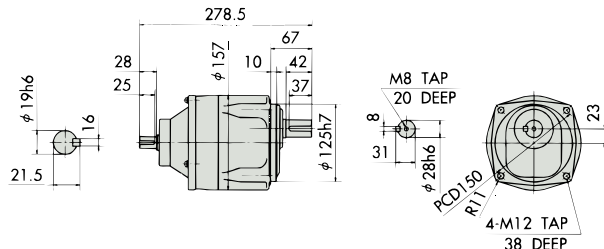
G-43 0.75kW GRTA075-28L5~25

Reduction ratio : 5, 10, 15, 20, 25	Approx. weight : 7.4kg
Reference page : Specification Chart→P70	



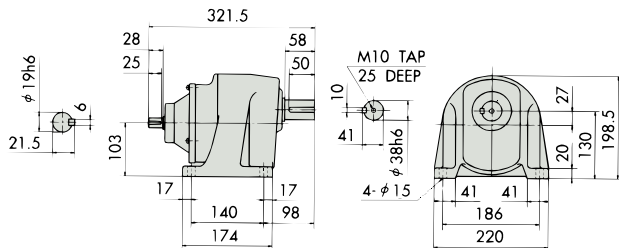
G-47 0.75kW GRTA075-28U5~25

Reduction ratio : 5, 10, 15, 20, 25	Approx. weight : 7.4kg
Reference page : Specification Chart→P70 Options→P57	



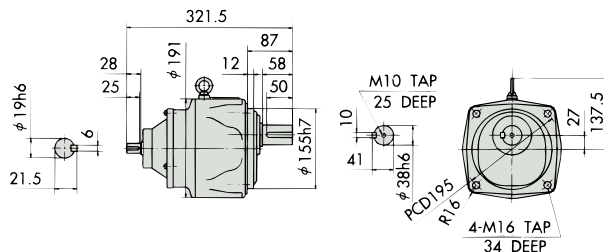
G-44 0.75kW GRTA075-38L30~75

Reduction ratio : 30, 40, 50, 60, 75	Approx. weight : 11.5kg
Reference page : Specification Chart→P70	



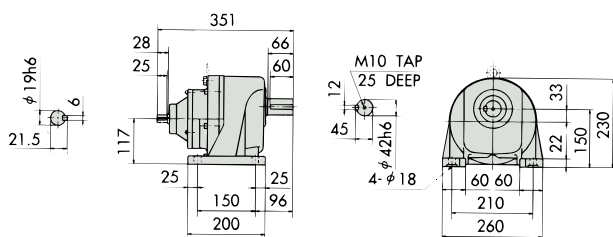
G-48 0.75kW GRTA075-38U30~75

Reduction ratio : 30, 40, 50, 60, 75	Approx. weight : 17.5kg
Reference page : Specification Chart→P70 Options→P58	



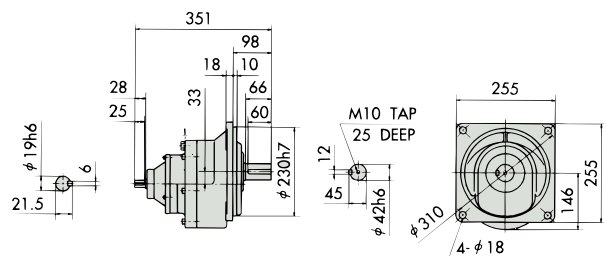
G-45 0.75kW GRTA075-42L100~200

Reduction ratio : 100, 120, 165, 200	Approx. weight : 32.9kg
Reference page : Specification Chart→P70	



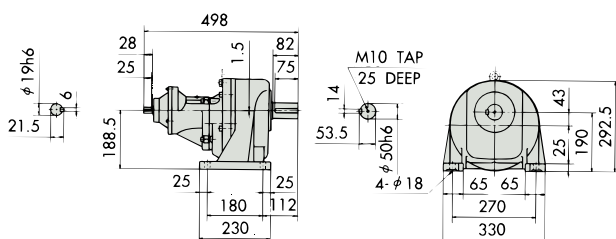
G-49 0.75kW GRTA075-42F100~200

Reduction ratio : 100, 120, 165, 200	Approx. weight : 36.9kg
Reference page : Specification Chart→P70	



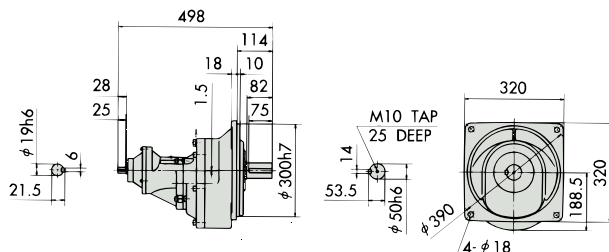
G-46 0.75kW GRTA075-50L300~450

Reduction ratio : 300, 360, 450	Approx. weight : 57.0kg
Reference page : Specification Chart→P70	



G-50 0.75kW GRTA075-50F300~450

Reduction ratio : 300, 360, 450	Approx. weight : 61.9kg
Reference page : Specification Chart→P70	



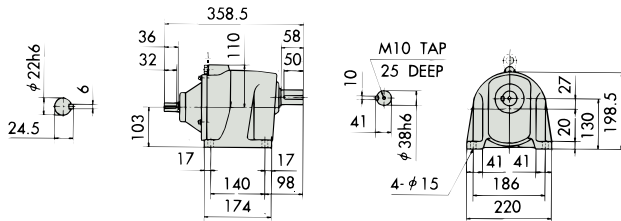
Inline Reducer Type Outline Dimensions

1.5kW · L : Foot mount type / U : Face mount type / F : Flange mount type

GEAR MOTOR TA Series

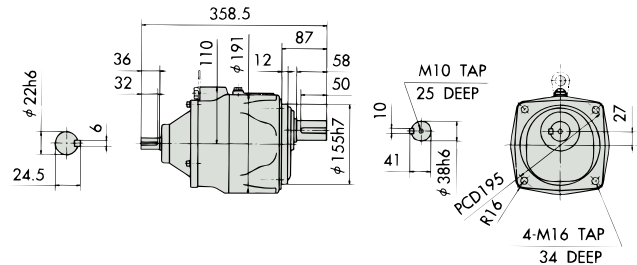
G-51 1.5kW GRTA150-38L5~30

Reduction ratio : 5, 10, 15, 20, 25, 30	Approx. weight : 16.0kg
Reference page : Specification Chart→P70	



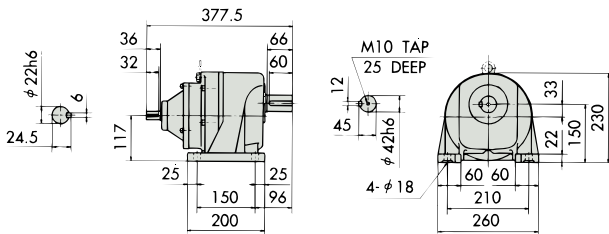
G-54 1.5kW GRTA150-38U5~30

Reduction ratio : 5, 10, 15, 20, 25, 30	Approx. weight : 23.0kg
Reference page : Specification Chart→P70 Options→P58	



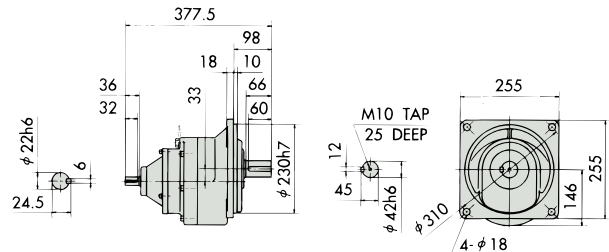
G-52 1.5kW GRTA150-42L40~75

Reduction ratio : 40, 50, 60, 75	Approx. weight : 37.0kg
Reference page : Specification Chart→P70	



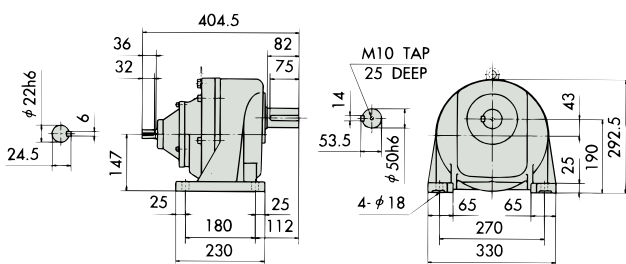
G-55 1.5kW GRTA150-42F40~75

Reduction ratio : 40, 50, 60, 75	Approx. weight : 38.0kg
Reference page : Specification Chart→P70	



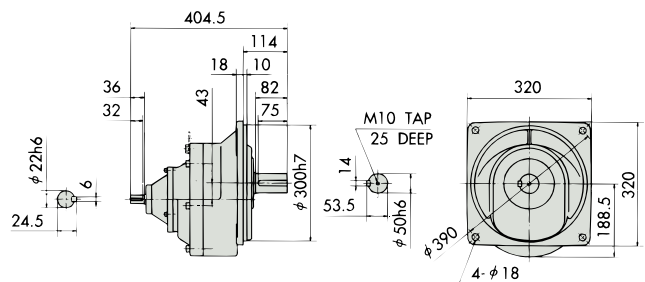
G-53 1.5kW GRTA150-50L100~200

Reduction ratio : 100, 120, 165, 200	Approx. weight : 57.0kg
Reference page : Specification Chart→P70	



G-56 1.5kW GRTA150-50F100~200

Reduction ratio : 100, 120, 165, 200	Approx. weight : 59.0kg
Reference page : Specification Chart→P70	



Outline Dimensions

L.U.F
G-51
G-52
G-53
G-54
G-55
G-56

1.5

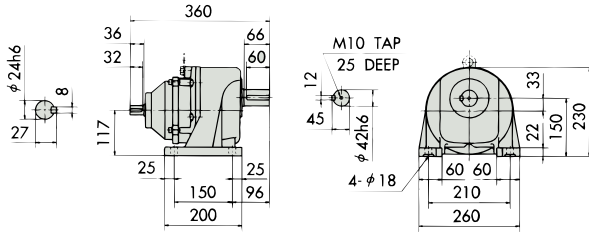
Inline Reducer Type Outline Dimensions

2.2kW · L : Foot mount type / F : Flange mount type

GEAR MOTOR TA Series

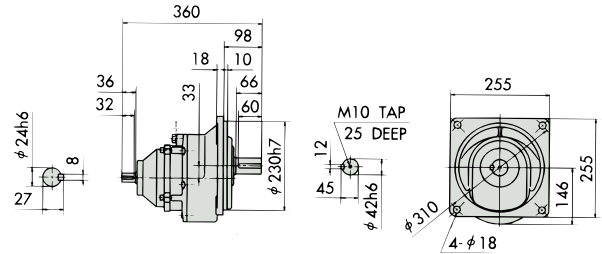
G-57 2.2kW GRTA220-42L5~30

Reduction ratio : 5, 10, 15, 20, 25, 30 Approx. weight : 32.0kg
Reference page : Specification Chart→P71



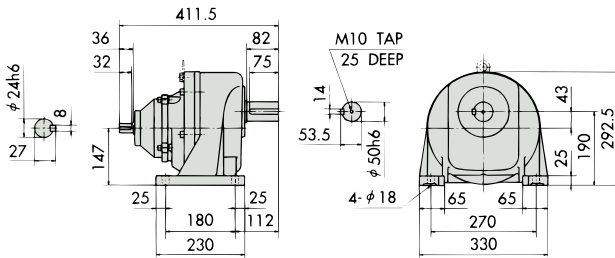
G-60 2.2kW GRTA220-42F5~30

Reduction ratio : 5, 10, 15, 20, 25, 30 Approx. weight : 34.0kg
Reference page : Specification Chart→P71



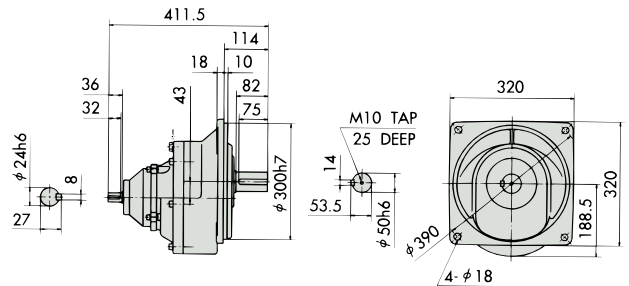
G-58 2.2kW GRTA220-50L40~75

Reduction ratio : 40, 50, 60, 75 Approx. weight : 53.0kg
Reference page : Specification Chart→P71



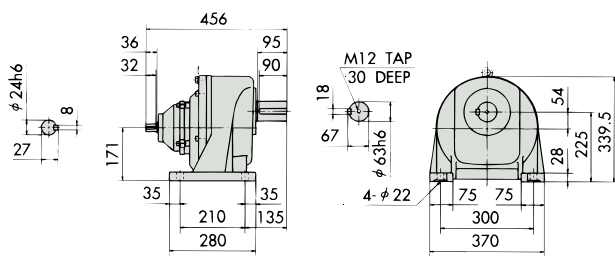
G-61 2.2kW GRTA220-50F40~75

Reduction ratio : 40, 50, 60, 75 Approx. weight : 56.0kg
Reference page : Specification Chart→P71



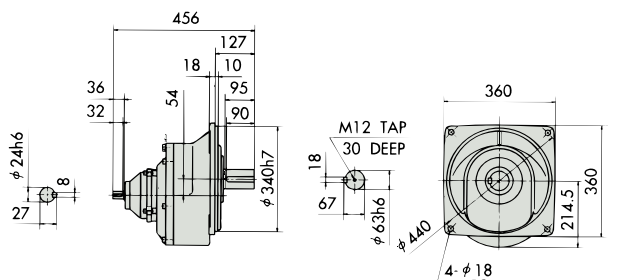
G-59 2.2kW GRTA220-63L100~200

Reduction ratio : 100, 120, 165, 200 Approx. weight : 84.0kg
Reference page : Specification Chart→P71



G-62 2.2kW GRTA220-63F100~200

Reduction ratio : 100, 120, 165, 200 Approx. weight : 88.0kg
Reference page : Specification Chart→P71



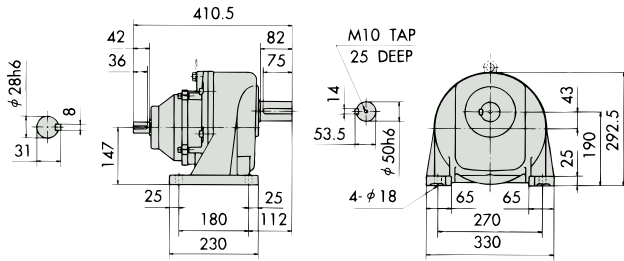
Inline Reducer Type Outline Dimensions

3.7kW · L : Foot mount type / F : Flange mount type

GEAR MOTOR TA Series

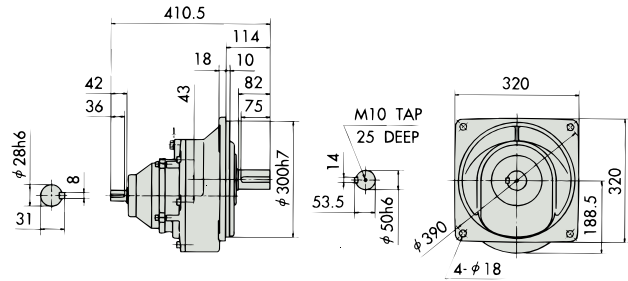
G-63 3.7kW GRТА370-50L5~30

Reduction ratio : 5, 10, 15, 20, 25, 30	Approx. weight : 53.0kg
Reference page : Specification Chart→P71	



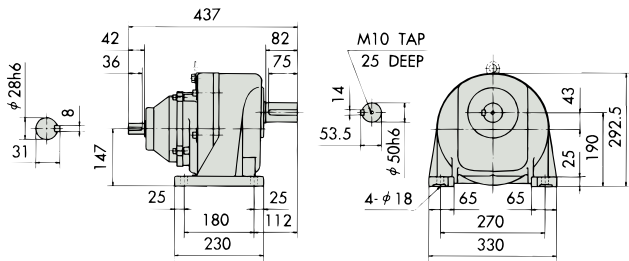
G-65 3.7kW GRТА370-50F5~30

Reduction ratio : 5, 10, 15, 20, 25, 30	Approx. weight : 55.0kg
Reference page : Specification Chart→P71	



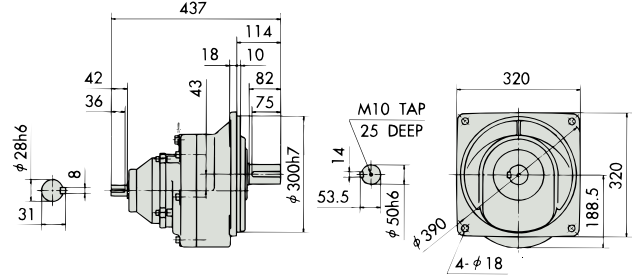
G-64 3.7kW GRТА370-50L40~50

Reduction ratio : 40, 50	Approx. weight : 57.0kg
Reference page : Specification Chart→P71	



G-66 3.7kW GRТА370-50F40~50

Reduction ratio : 40, 50	Approx. weight : 59.0kg
Reference page : Specification Chart→P71	

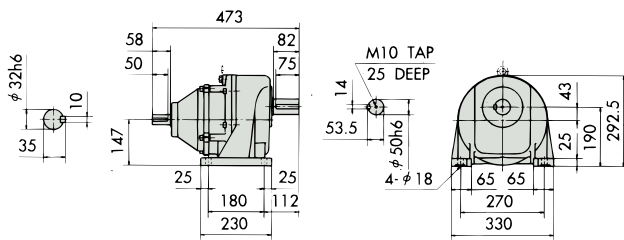


5.5kW · L : Foot mount type / F : Flange mount type

GEAR MOTOR TA Series

G-67 5.5kW GRТА550-50L5~30

Reduction ratio : 5, 10, 15, 20, 25, 30	Approx. weight : 62.0kg
Reference page : Specification Chart→P71	



G-68 5.5kW GRТА550-50F5~30

Reduction ratio : 5, 10, 15, 20, 25, 30	Approx. weight : 65.0kg
Reference page : Specification Chart→P71	

