



Asphalt Batch Plant Processing
Engineered for Asphalt Operations



www.ustsubaki.com

The right mix

Asphalt is tough! Hard aggregates, shock loads, intense heat, and almost around-the-clock operation during the paving season mean every component in your operation has to perform. Union chain from U.S. Tsubaki delivers.

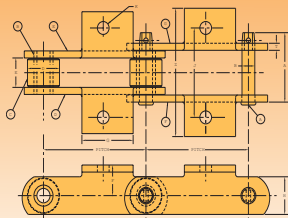
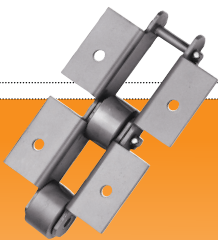
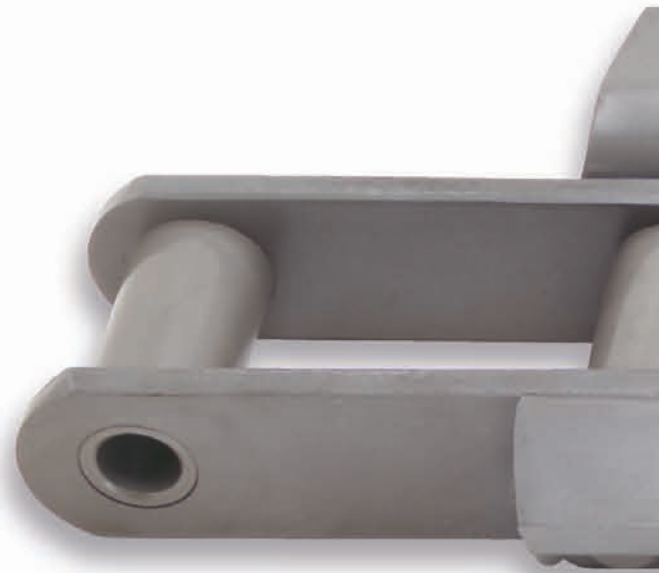
U.S. Tsubaki hit the road around the world to bring you the strongest, longest-lasting asphalt chains. Each is built exactly to Union specifications, offering these critical benefits: tight press fits and precise pitch control, increased strength, and longer service life.

Choose U.S. Tsubaki for:

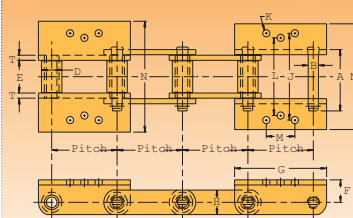
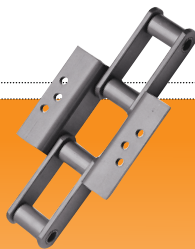
- High-quality, long-lasting operations
- Reliable performance even with high shock loads
- Durable operation in tough conditions
- Decreased downtime and fewer unplanned stops

Incline Conveyor Chains

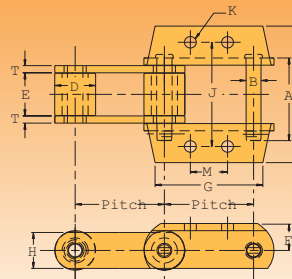
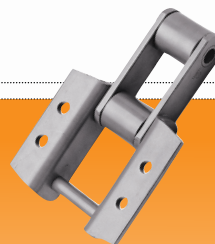
Available in 4" or 6" pitch with K- or slotted M-style attachments. These chains are constructed for maximum strength and longevity. Sidebars are thru hardened to stand up to high impact loads. And rollers are specially heat treated to resist abrasion in even the toughest operating conditions.



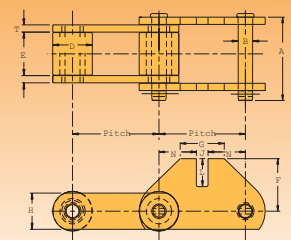
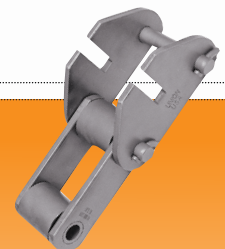
K-11 Style Attachment



K-1/K-2 or K-3 Style Attachment

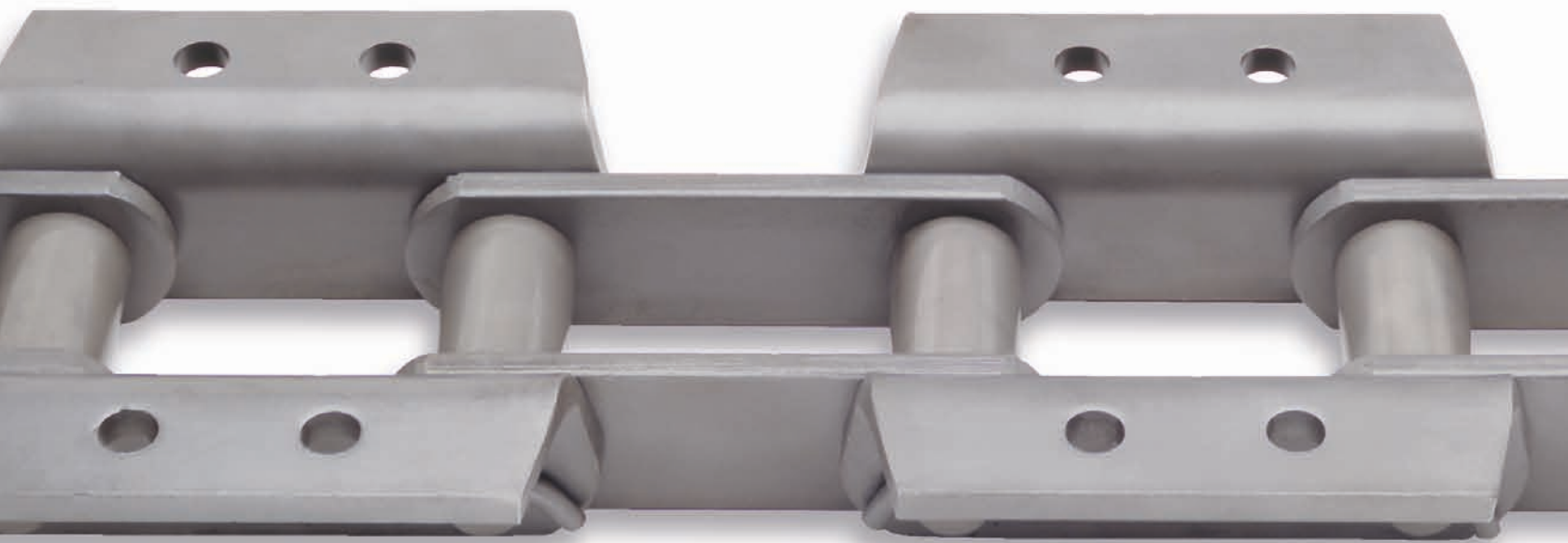


K-2 or K-44 Style Attachment



MM-1 Style Attachment

X for success



Incline Conveyor Chart

Drwg #	Description	Pitch	Pin		Inside Width E	Roller Dia. D	Sidebar		Attachment						Hole Dia K	Average Tensile Strength (lbs.)	Max Work Load (lbs.)	Approx. Weight (lbs./ft.)
			A	B			H	T	F	G	M	N	J	L				
P-10024	2111/K-11 E/Pitch	6	3.69	0.75	1.56	1.88	2.00	0.38	1.63	3.00	-	6.79	4.75	-	0.69	83,000	5,900	12.5
P-10020	U-3945/K-3 E/3rd Pitch	4	3.75	0.63	2.00	1.25	1.50	0.31	1.38	5.63	1.75	6.90	5.31	4.75	0.44	44,000	5,740	9.8
P-5822	U-3952/K-2 E/3rd Pitch	4	4.13	0.75	2.00	1.44	1.75	0.38	1.63	6.00	1.75	7.03	5.50	-	0.53 square	60,000	7,220	12.1
P-5827	3433 w/K-1/K-2 E/4th (1.5" roller)	4	4.13	0.63	2.13	1.50	1.50	0.38	1.00	2.82	2.25	6.69	5.31	-	0.66 outer holes 0.81 middle	40,000	6,300	9.7
P-10023	U-3940/K-2 E/2nd Pitch	6	4.13	0.75	2.00	1.63	2.25	0.38	2.00	7.75	2.31	7.78	6.25	-	0.56	90,000	7,220	15.1
P-10025	856/K-24 E/2nd Pitch	6	5.75	1.00	3.00	1.75	2.50	0.50	1.88	7.25	2.50	9.50	7.25	-	0.75	100,000	14,000	22.1
P-10026	U-9856/K-44 E/2nd Pitch	6	5.75	1.00	3.00	2.75	2.50	0.50	1.88	7.25	2.50	9.50	7.25	-	0.81	140,000	14,000	28.0
P-10027	U-9856/MM-1* E/2nd Pitch	6	5.75	1.00	3.00	2.75	2.50	0.50	3.75	3.06	-	2.59	0.81	2.75	-	140,000	14,000	25.6
P-5831	U-9856/MM-1-9 E/2nd Pitch (slot at 9° angle)	6	5.75	1.00	3.00	2.75	2.50	0.50	3.75	3.06	-	-	0.81	2.75	-	140,000	14,000	26.0

STOCK CHAIN

* Verify attachment sidebar slot width and depth prior to ordering

U.S. Tsubaki

Engineered for Asphalt Operations

**The fastest way
through road
construction...
Call today**

Complete Solutions for the Asphalt Industry

- Incline Conveyor Chains
- Bucket Elevator Chains
- Engineering Class Drive Chains
- Apron Conveyor Chains
- Paver Chains
- Sprockets
- Pro-Align™ Laser Alignment System
- ONE-TOUCH INSPECTION DOOR®



U.S. Tsubaki, Inc.
Corporate Headquarters
301 E. Marquardt Drive
Wheeling, IL 60090
Tel: (800) 323-7790
Tel: (847) 459-9500
Fax: (847) 459-9515

Engineering Chain Division
1010 Edgewater Drive
Sandusky, OH 44870
Tel: (800) 537-6140
Tel: (419) 626-4560
Fax: (419) 626-5194

Web Site: www.ustsubaki.com

NOTE: IN ACCORDANCE WITH THE POLICY OF U.S. TSUBAKI, INC., TO CONSISTENTLY IMPROVE ITS PRODUCTS, THE SPECIFICATIONS IN THIS BROCHURE ARE SUBJECT TO CHANGE WITHOUT NOTICE. FOR CURRENT TERMS AND CONDITIONS OF SALE, SEE OUR ENGINEERING CHAIN GENERAL CATALOG.